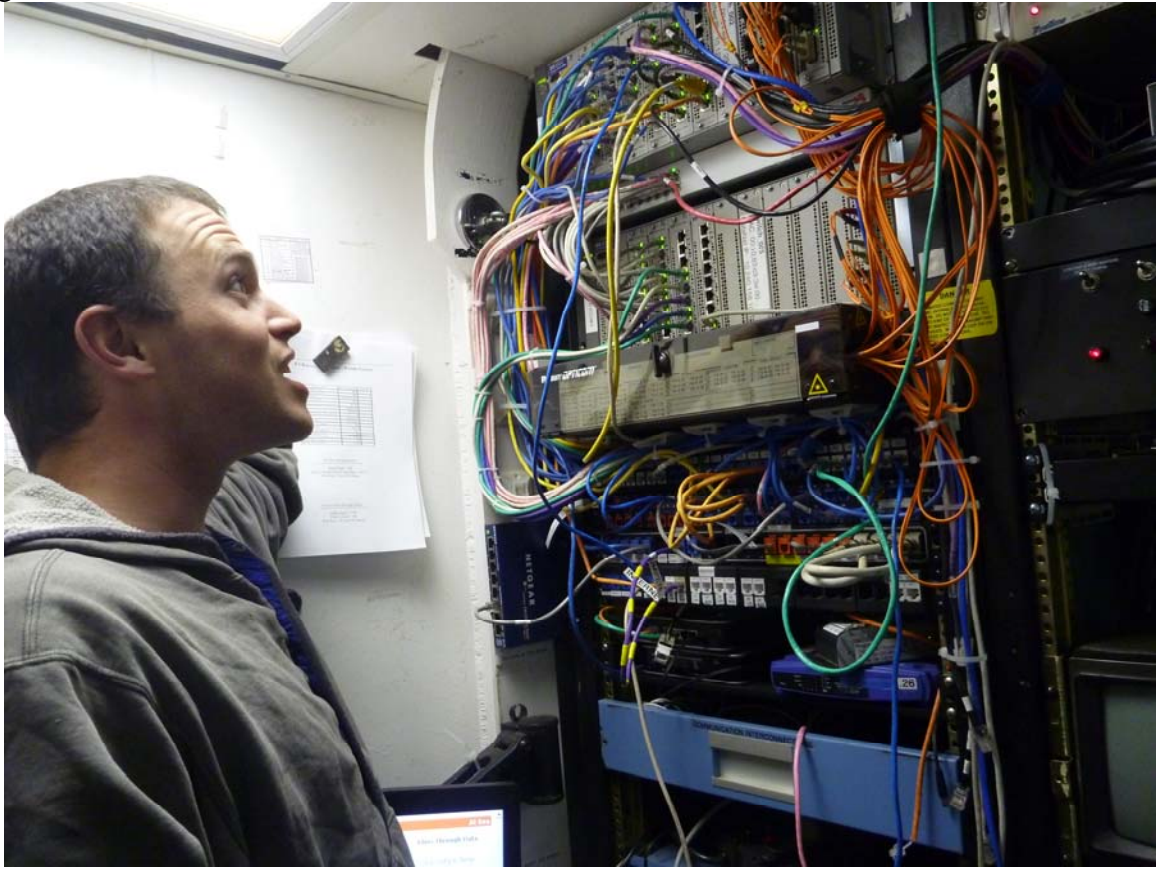


Well today it was more of the same, we deployed some more ocean bottom seismographs:



I tried to figure out where some wires went:



I just guessed that they went to the engine, so I went down and fixed it



And I swabbed the deck on my way :D



Here's a satellite interface that I helped rig up, it's the part with all the individual wires and the 9v battery. I went with a 9v partially because I wanted to avoid grounding problems, partially because there was a problem with an auxiliary power supply in one of the sat dish control boxes, but mostly because it's funny. I changed the battery so we could keep having interwebs coverage :D

So here's me signing out :D

